

# DR700™ RETROFIT VERSION 2.0

Lumen	720 lm
Power Usage	10.5 W
Colour Rendering Index	94

# brightgreen

## SPECIFICATION CODES

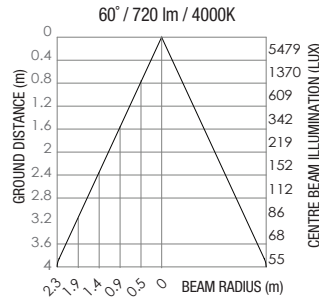
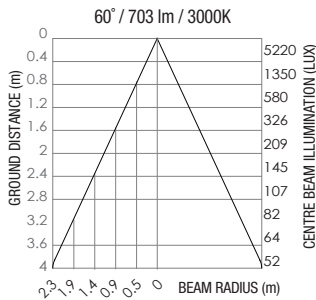
UNIT	FAMILY	COLOR TEMP	BEAM ANGLE	BODY COLOR
DR700 MR16 (720lm)	RT	3k	60	B (Black)
DR700 GU10 (703lm)	-	4k	-	-
-	-	-	-	-

## FASCIA APPEARANCE

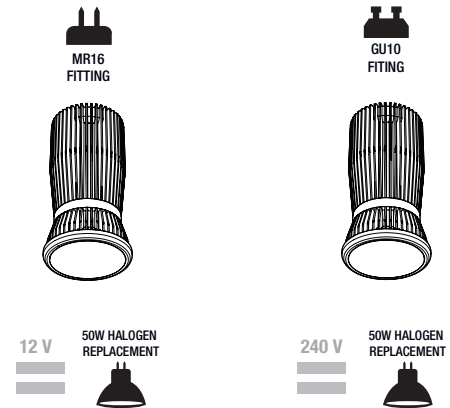


## LIGHT PROPAGATION DIAGRAM

Illumination at a Distance



## COMPATIBILITY



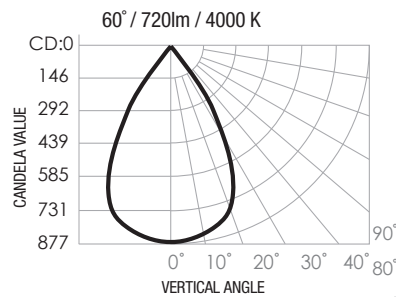
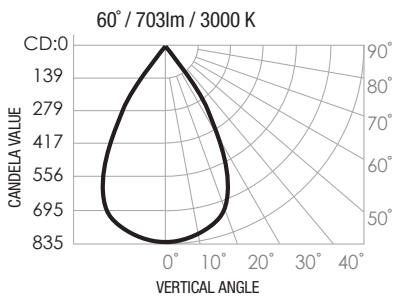
## COMMON APPLICATIONS

RESIDENTIAL	COMMERCIAL	LIGHTING TECHNIQUES
Retrofit	Offices	General Direct Feature

Note: Retrofit DR700 is designed for wherever 50W halogen are in use

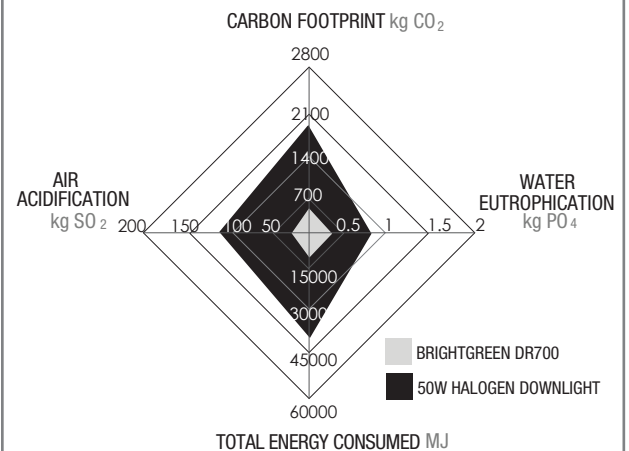
## PHOTOMETRICS

DR700 Polar Candela Distribution  
(IES files available at brightgreen.com)



## ENVIRONMENTAL IMPACT

Lifetime: 70,000 hrs (30 years life)  
6 hours running time per day



# INSTALLATION DIAGRAM

All parts in this diagram are included and assembled in DR700 package (excluding specified parts)



RECOMMENDED  
MAX. AMBIENT  
TEMPERATURE

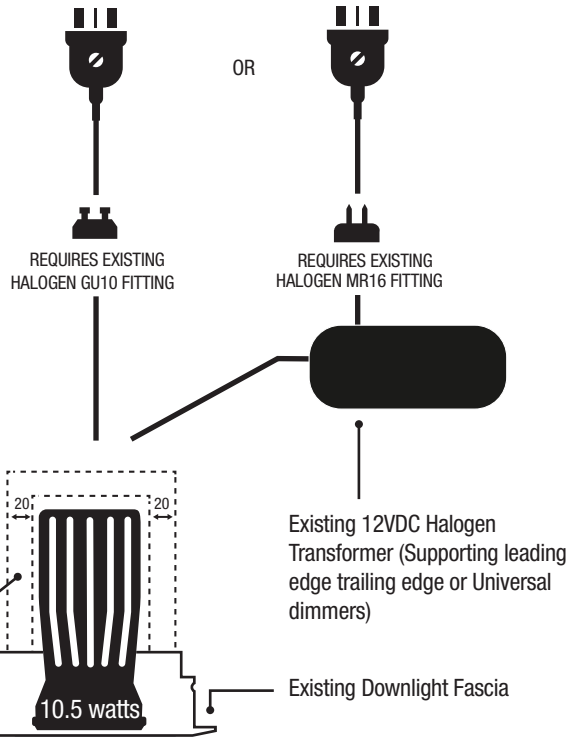


INSTALL  
UNIT FACING  
DOWNWARDS



CLIPSAL C-BUS  
COMPATIBLE

**GU10 (703 lm)**                      **MR16 (720 lm)**



Keep clearance of 20mm all around back of luminaire (Safe for abutment to insulation in accordance with AS3000. thermal throttling occurs at ~70°C)

10.5 watts

703 lm (GU10)  
720 lm (3k MR16)

# SPECIFICATIONS

## Physical

Body Colour	Black
Weight	200g
Gimble Angle	According to fascia
Install Clearance	20mm
Luminaire Safety Class	IEC 62560, IEC 620311
Warranty	3 years
Material	Aluminium (6061, 1060), PC

## Operational

	MR16	GU10
Lumen Output (3000K)	720 lm	703 lm
Efficacy (3000K)	69 lm/W	67 lm/W
Lumen Output (4000K)	756 lm	738 lm
Efficacy (4000K)	72 lm/W	70 lm/W
Light Quality	CRI 94	
Beam Angle	60°	
Color Temp.	3000K or 4000K	
Operating Temp.	-30°C to 85°C	
Average Temp.	65°C (@Ta25)	
Ambient Temp.	-28°C to 60°C	
Lifetime	70,000 hrs	
Lumen Maintenance	40,000 hrs (@Ta25)	

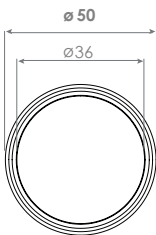
## Electrical

	MR16	GU10
Total Power	10.5 W	10.5 W
Input Voltage	12VDC	240VAC
Dimming Range (%)	0-100	10-100
Luminaire Power Factor	~0.95	~0.95
IP Rating	IP30	IP30
Surge Protection	N/A	3100V
Cable Length	N/A	N/A

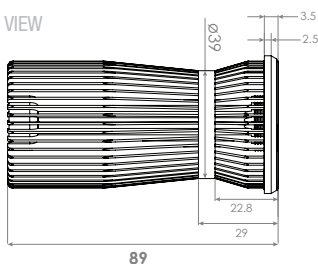
# DIMENSIONS

DR700 MEASUREMENTS IN MILLIMETRES

FRONT VIEW



SIDE VIEW



# Compatibility

## MR16 ONLY

Transformer	CLIPSAL	HAGERBLU	HPM	LEGRANDE	LUTRON	OTHER
ET Redback	32E450TM, 32E450UDM, 31E2RUDM, 31E2PUDM, 60TDM	WBMD400LO WBMD400TO	CAT700T CAT400T	400L, 400T	SEL300P DVEV300P	KIWI K007T, LUMEX 'Loadsmart', LUXMAN T400P, PDL 624TM
Tridonic Viper	32E450TM, 32E450UDM 31E2RUDM, 31E2PUDM	WBMD400LO WBMD400TO	CAT700T CAT400T	400L, 450P, 400T	SEL300P DVEV300P	KIWI K007T, LUMEX 'Loadsmart', LUXMAN T400P, L400E, PDL 624TM
Expolight CRC60, Actec Mini60	32E450TM, 32E450UDM, 31E2RUDM, 31E2PUDM, 60TDM	WBMD400LO WBMD400TO	CAT700T CAT400T	400L, 450P, 450T	SEL300P DVEV300P	KIWI K007T, LUMEX 'Loadsmart', LUXMAN T400P, PDL 624TM
LTR LIT-60	32E450TM, 32E450UDM, 31E2RUDM, 31E2PUDM, 60TDM	WBMD400LO WBMD400TO	CAT700T CAT400T	400L, 450T	SEL300P DVEV300P	KIWI K007T, LUMEX 'Loadsmart', LUXMAN T400P, PDL 624TM

Note: Other compatible transformers include Actec: MINI105, MIN60, VENUS60, Clipsal: CET60VA Crompton: CRC60, EXCEL60, Focus: CRT105, FOC60, FOCUS560, GEMTECH POD 60, GTA: GTA105, IKEA: TYP50703 S80, LIT: LTR65, Lucci: TB60L, Nelson: MICRO60, MTECOURGAR60, MTETRADE105, Nice Price: 105, Osram: REDBACK, Radium: ET-RALOPOWER, Telbis: ULTRA60, Tridonic: ULTRA60, ATCO SPEEDY, UGE: UEC60

## GU10 / INT

		WBMD400LO WBMD400TO	CAT700T CAT400T	400L, 450T	SEL300P DVEV300P	KIWI K007T, LUMEX 'Loadsmart', LUXMAN T400P, PDL 624TM
--	--	------------------------	--------------------	------------	---------------------	--